

PPS Plan & Application 2025-2027

For Oregon Department of Education's Integrated
Guidance

April 2025



PORTLAND
Public Schools

Contents

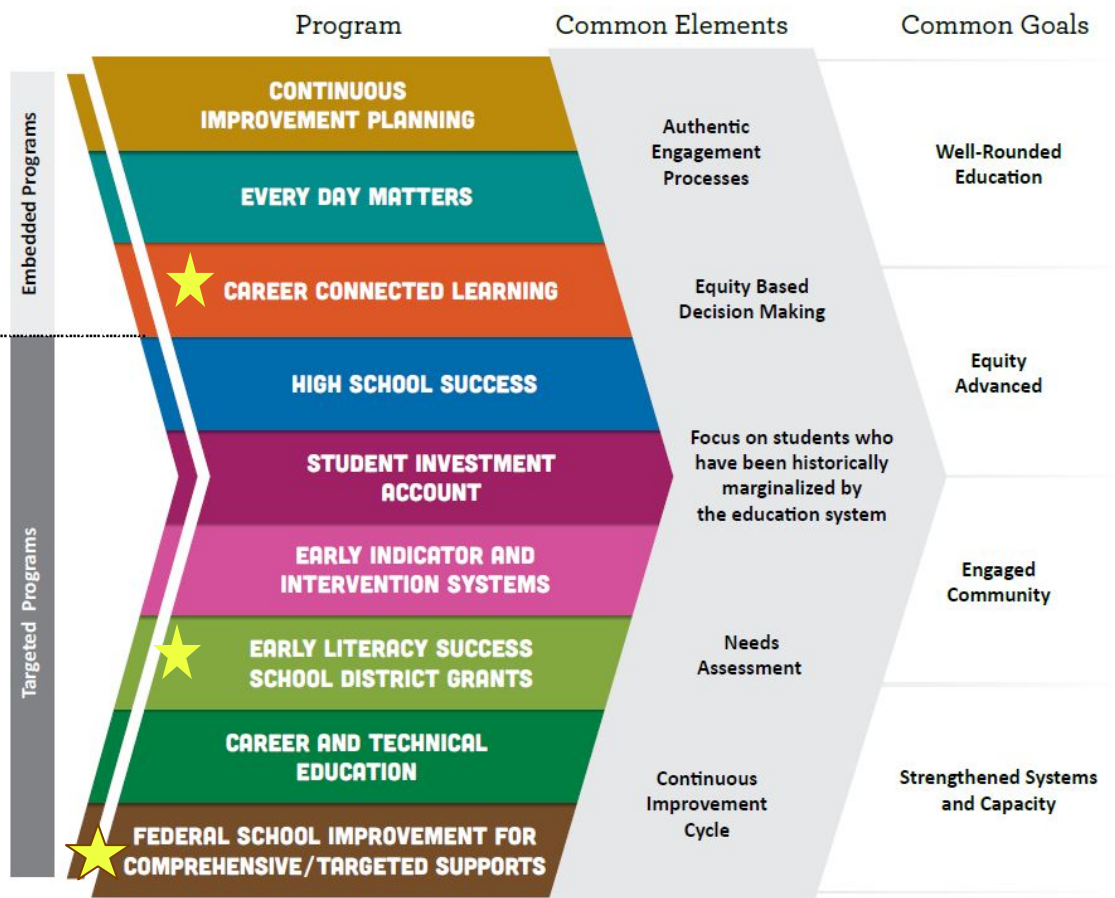
- **Overview of ODE's Integrated Grants & Guidance**
- **Grant Funding**
- **PPS Plan Elements**
- **Charter School Plans**

Overview of ODE's Integrated Grants and Guidance



**TOGETHER,
WE RISE**

ODE Integrated Grant Program

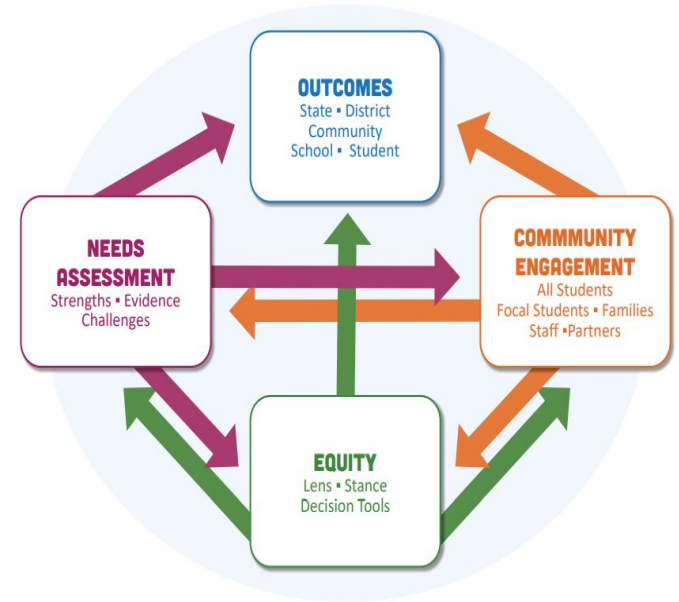


★ Represents a program added to ODE's Integrated Guidance since 2023

- ODE's Integrated Guidance includes nine programs
- They provide Portland Public Schools with about \$125M in state and federal funding for the 2025–27 biennium
- The PPS plan was developed based on a comprehensive needs assessment
- The PPS district budget process, community engagement, and program specific requirements informed the plan

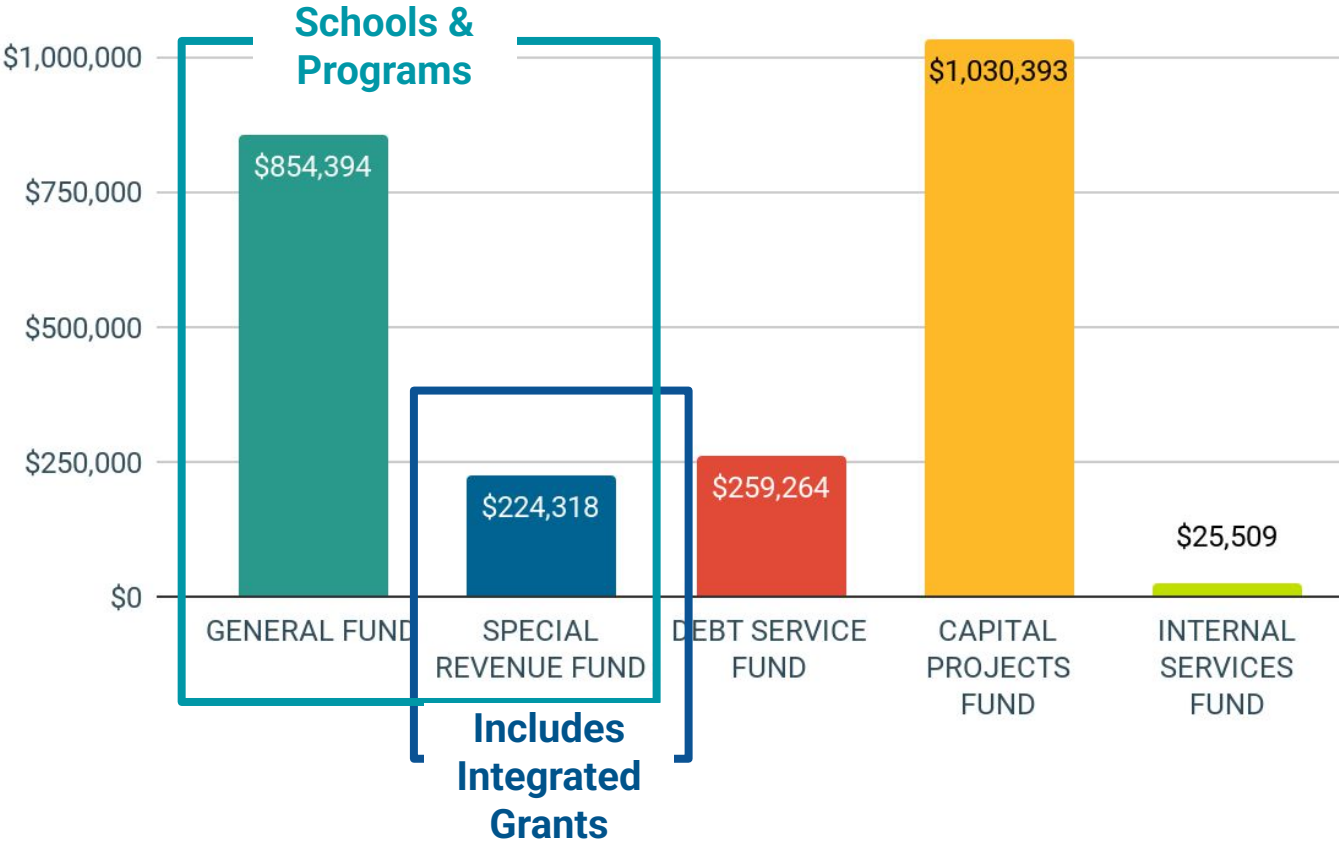
ODE Required Planning Process

- Use of an equity lens
- Community and staff engagement
- Tribal Consultation
- Comprehensive Needs Assessment
- Develop Plan Strategies & Outcomes
- Identify Activities and Investments
- Complete a 2-year Budget + Narrative Application



Funds in the PPS Budget

2024-25 Adopted Budget (In Thousands)



The total PPS budget is \$2.39 billion budget and is divided into five funds. The Integrated Guidance Funding is part of the Special Revenue Fund.

The **Special Revenue Fund** supplements the PPS operating fund from local, state, and federal sources. In 2025-2026, \$62M of the \$224M comes from the state and federal grants included in this application.

Funding Allocations by Program

Grant Program	2024-25 Actual	2025-26 +/-	2025-26 Preliminary	2026-27 +/-	2026-27 Preliminary
High School Success (HSS)	\$13,038,828	0.9%	\$13,162,644	4.1%	\$13,699,894
Student Investment Account (SIA)	\$45,309,123	-0.3%	\$45,163,269	4.1%	\$47,006,668
ESSA (CSI/TSI)	\$928,884	1.1%	\$938,838	N/A	TBD
Career Technical Education - Perkins V (CTE)	\$470,328	0.0%	\$470,328	0.0%	\$470,328
Early Indicators & Intervention Systems (EIS)	\$125,172	0.0%	\$125,172	0.0%	\$125,172
Early Literacy	\$3,425,823	-8.6%	\$3,131,583	4.1%	\$3,259,403
Total Allocation	\$63,298,158	-0.5%	\$62,991,834	N/A	\$64.6M (Estimate)

- The table above includes a breakdown of the allocations by grant.
- Combined grant funding was reduced by 0.5% from the 2024-25 school year. Grant funding is tied to ADMw, so declining PPS enrollment reduces the grant allocation in 2025-26.
- The PPS Integrated Grant budget plan allocates pass through SIA funds to charter schools and community-based organizations (CBOs). This plan allocates \$2.2 million to charter schools and CBOs for 2025-26.

PPS Integrated Plan Priorities

The combined integrated grant investments are based on identified needs and center inclusive and joyful learning experiences for students to access the resources and supports they need to demonstrate excellence.

- Early Literacy Achievement
- K-12 Academic Success
- Attendance and Engagement
- Graduation and Postsecondary Readiness
- Safe and Supportive Schools
- Culture of Racial Equity & Care

Application Links

There are several required elements for this application. The Application Narrative and the Integrated Plan and Budget include outcomes, strategies, investments, and a comprehensive description of the planning process and priorities.

Additional attachments provide supplemental and more details information supporting the narrative and budget process.

Application Narrative & Budget

[2025-27 Integrated Application Narrative](#)

[2025-2027 Integrated Plan and Budget](#)

Key Application Attachments

- [PPS Equity Lens](#)
- [Affirmation of Tribal Consultation](#)
- [Tribal Consultation Worksheet](#)
- [PPS Early Literacy Inventory](#)
- [Early Literacy Allowable Uses](#)
- [PPS Perkins Needs Assessment](#)
- [CTE Perkins Local Improvement Plan](#)



**TOGETHER,
WE RISE**

Charter School Plans



**TOGETHER,
WE RISE**

Charter School Plans

- Four district-sponsored and two state-sponsored charter schools are included in the district's application. (Per a 2023 statutory change to the Student Success Act, PPS is responsible to administer the integrated plan for the two state-sponsored charter schools.)
- PPS provides the funding passthrough to charters only for SIA.
- PPS provides broad fiscal and monitoring oversight, but each charter school maintains its own integrated plan and budget.
- Where applicable, PPS actively engages with all charter leaders – district-sponsored or state-sponsored – to administer SIA funds, including coordinating budgets and aligning strategies.

District-Sponsored Charter School Plans

Charter School	Integrated Plan & Budget 2025-27	Early Literacy	District Charter Program Agreement (DCPA)
Emerson School	Outcomes & Strategies Budget	Inventory Allowable Uses	DCPA
Le Monde French Immersion	Outcomes & Strategies Budget	Inventory Allowable Uses	DCPA
Portland Arthur Academy	Outcomes & Strategies Budget	Inventory Allowable Uses	DCPA
Portland Village School	Outcomes & Strategies Budget	Inventory Allowable Uses	DCPA



**TOGETHER,
WE RISE**

State-Sponsored Charter School Plans

Charter School	Integrated Plan & Budget 2025-27	Early Literacy	District Charter Program Agreement (DCPA)
Cottonwood School of Civics & Science	Outcomes & Strategies Budget	Inventory Allowable Uses	DCPA
The Ivy School	Outcomes & Strategies Budget	Inventory Allowable Uses	DCPA



**TOGETHER,
WE RISE**

Thank you



**TOGETHER,
WE RISE**